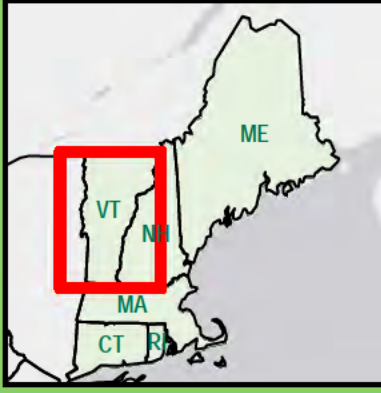


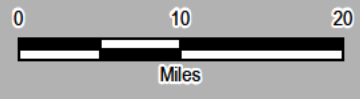
Proposed Lake Cable Route

Proposed Roadway Cable Route



**Legend**

- Proposed Ludlow Converter Site
- Proposed Roadway Cable Route
- Proposed Lake Cable Route



Sources: ESRI, HDR, VHB, TRC, TDI New England

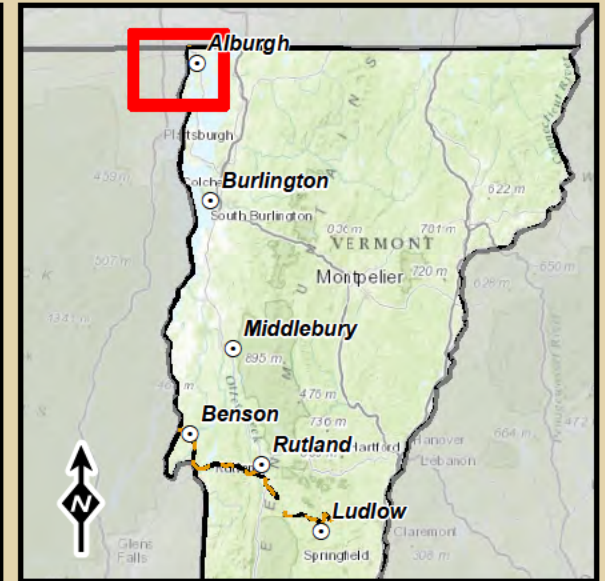
**TDI New England**  
 A Blackstone Portfolio Company

**New England Clean Power Link**

**Proposed Cable Route**

Created: 10/15/2014 14 Gabriel Drive  
 Augusta, ME 04330

V:\PROJECTS\AUGUST2014\NE Clean Power\Notes\_248\_Overview\_11x17.mxd



**Legend**

- Mile Marker
- Proposed Lake Cable Route\*
- Proposed Terrestrial Cable Route\*
- Approximate NY State Boundary
- - - Approximate Town Boundary
- Streams
- Wetlands

0 1 2  
Miles

\* The thickness of the lines on this map are graphic representations and do not represent the actual dimensions of the proposed project features.

Created: 10/15/2014  
Data Sources: ESRI, TVCGI, TDI New England, TRC, VHB

**TDI New England**  
A Blackstone Portfolio Company

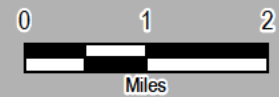
**New England  
Clean Power Link  
Proposed Route**

V:\PROJECTS\ALGUSTAD\TDI\NE Clean Power\Notes\248 Lake Cable Route\_11x17.mxd



**Legend**

- Mile Marker
- Proposed Lake Cable Route\*
- Proposed Terrestrial Cable Route\*
- Approximate NY State Boundary
- Approximate Town Boundary
- Streams
- Wetlands



\* The thickness of the lines on this map are graphic representations and do not represent the actual dimensions of the proposed project features.

Created: 10/15/2014

Data Sources: ESRI, TVCGI, TDI New England, TRC, VHB



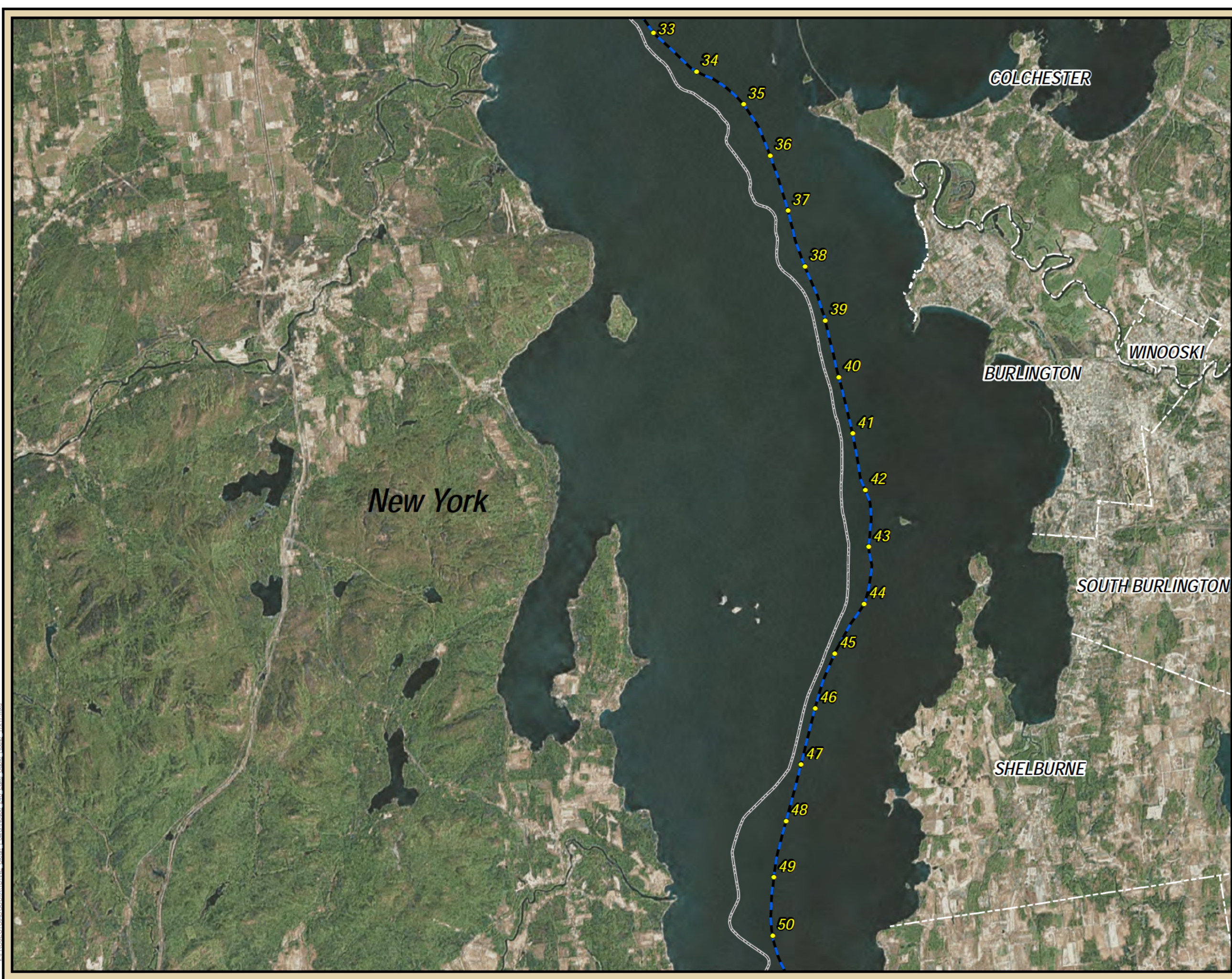
**New England  
Clean Power Link  
Proposed Route**

**2 of 23**



14 Gabriel Drive  
Augusta, ME 04330

V:\PROJECTS\AUGUSTADLINE Clean Power\Notes\248 Lake Cable Route\_11x17.mxd



**Legend**

- Mile Marker
- Proposed Lake Cable Route\*
- Proposed Terrestrial Cable Route\*
- Approximate NY State Boundary
- Approximate Town Boundary
- Streams
- Wetlands

0 1 2  
Miles

↑  
N

\* The thickness of the lines on this map are graphic representations and do not represent the actual dimensions of the proposed project features.

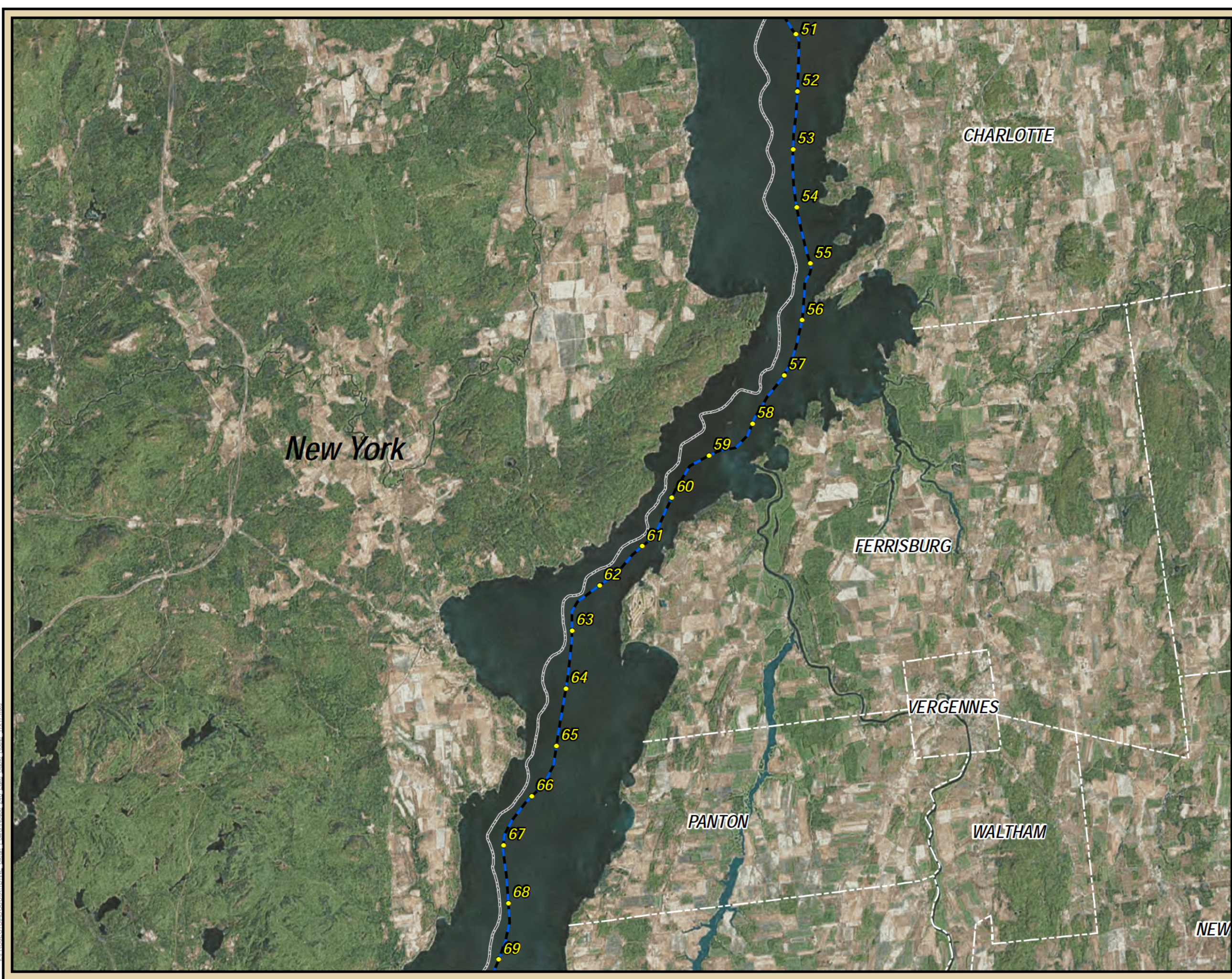
Created: 10/15/2014  
Data Sources: ESRI, TVCGI, TDI New England, TRC, VHB

**TDI New England**  
A Blackstone Portfolio Company

## New England Clean Power Link *Proposed Route*

**3 of 23**

V:\PROJECTS\AUGUSTADLINE\_Clean\_Power\Notes\_248\_Lake\_Cable\_Route\_11x17.mxd



**Legend**

- Mile Marker
- Proposed Lake Cable Route\*
- Proposed Terrestrial Cable Route\*
- Approximate NY State Boundary
- Approximate Town Boundary
- Streams
- Wetlands

0 1 2  
Miles

\* The thickness of the lines on this map are graphic representations and do not represent the actual dimensions of the proposed project features.

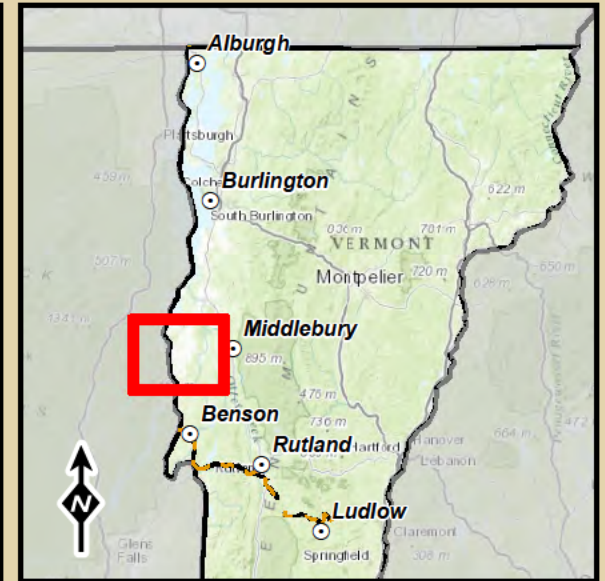
Created: 10/15/2014  
Data Sources: ESRI, TVCGI, TDI New England, TRC, VHB

**TDI New England**  
A Blackstone Portfolio Company

**New England  
Clean Power Link  
Proposed Route**

**4 of 23**

V:\PROJECTS\AUGUSTADLINE Clean Power\Notice 248 Lake Cable Route\_11x17.mxd



**Legend**

- Mile Marker
- Proposed Lake Cable Route\*
- Proposed Terrestrial Cable Route\*
- Approximate NY State Boundary
- Approximate Town Boundary
- Streams
- Wetlands

0 1 2  
Miles

↑  
N

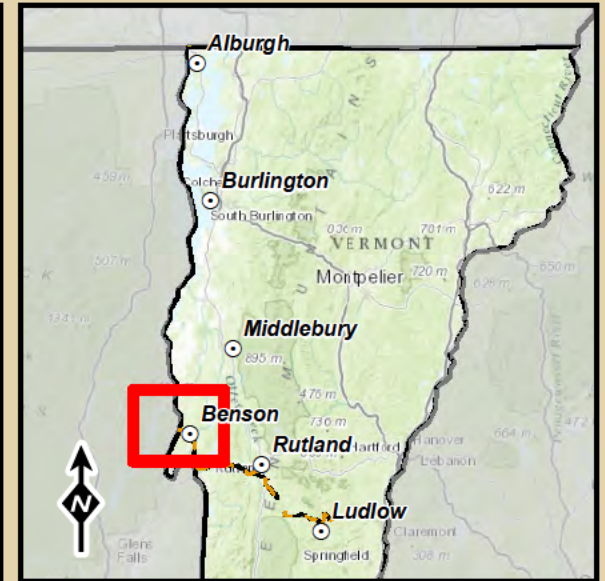
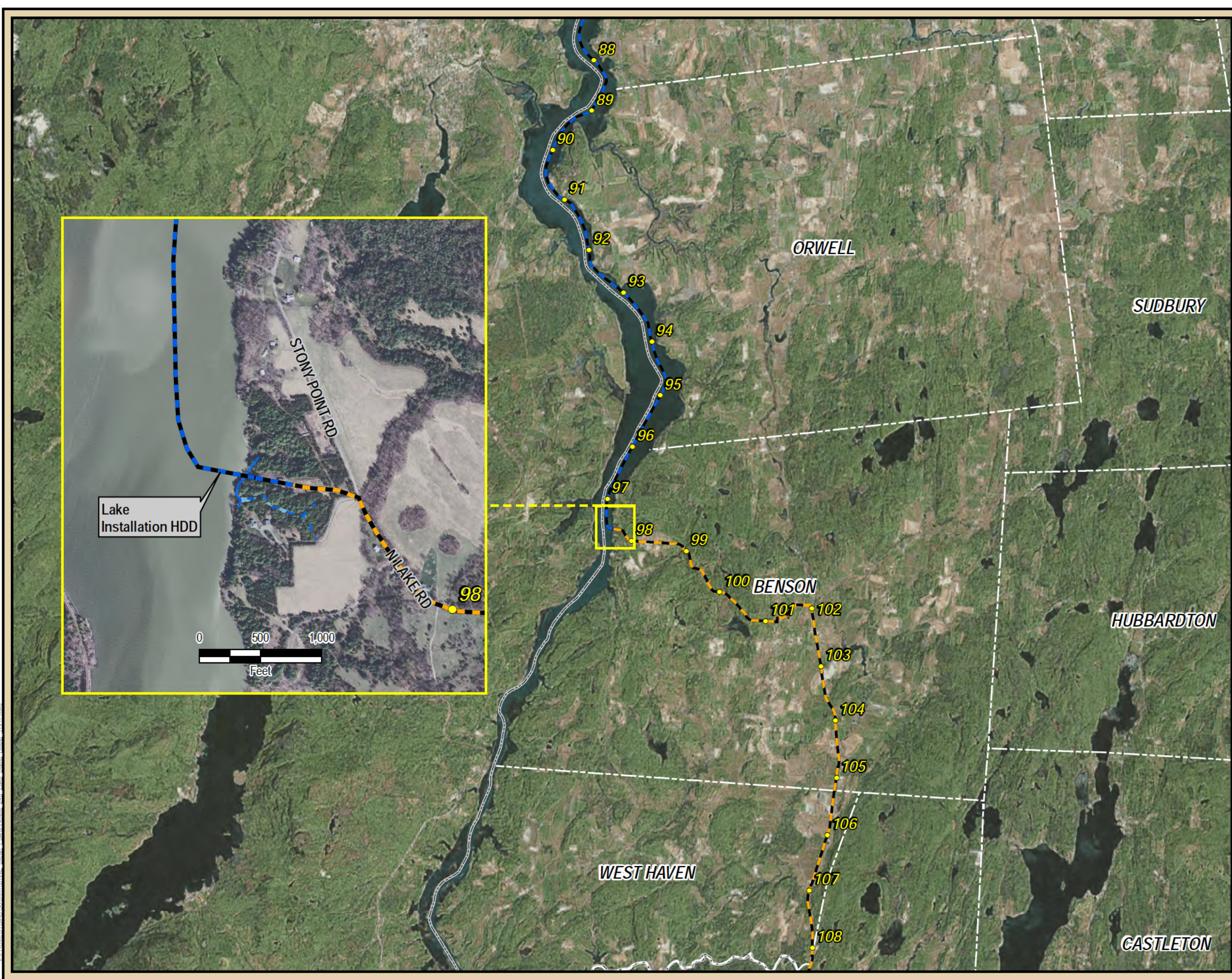
\* The thickness of the lines on this map are graphic representations and do not represent the actual dimensions of the proposed project features.

Created: 10/15/2014  
Data Sources: ESRI, TVCGI, TDI New England, TRC, VHB

**TDI New England**  
A Blackstone Portfolio Company

**New England  
Clean Power Link  
Proposed Route**

V:\PROJECTS\AUGUSTADLINE Clean Power\Notice 248 Lake Cable Route 11x17.mxd



**Legend**

- Mile Marker
- Proposed Lake Cable Route\*
- Proposed Terrestrial Cable Route\*
- Approximate NY State Boundary
- - - Approximate Town Boundary
- Streams
- Wetlands

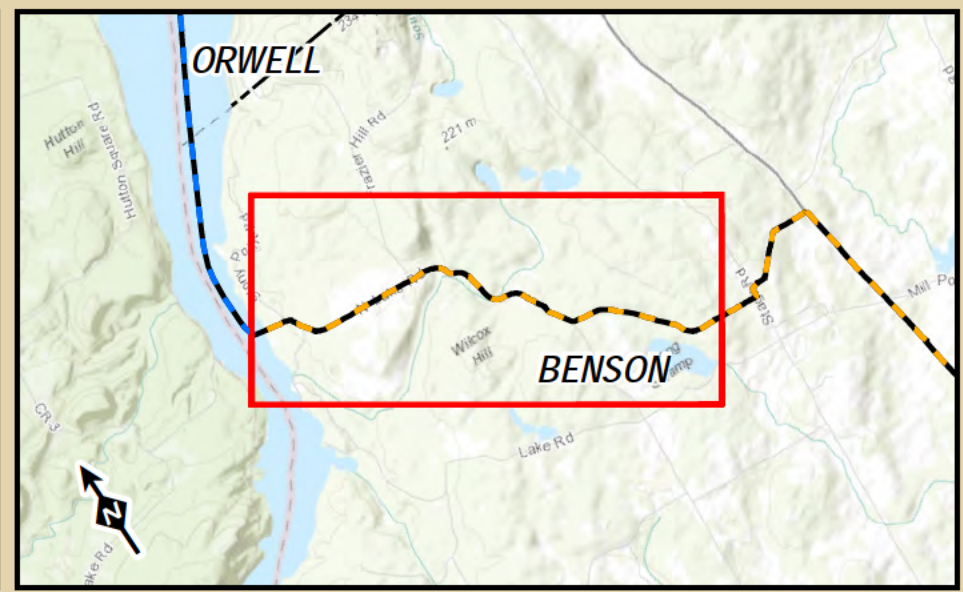
0 1 2  
Miles

\* The thickness of the lines on this map are graphic representations and do not represent the actual dimensions of the proposed project features.

Created: 10/15/2014  
Data Sources: ESRI, TVCGI, TDI New England, TRC, VHB

**New England  
Clean Power Link  
Proposed Route**

V:\PROJECTS\AUGUSTADT\INE Clean Power\Notes\248 Lake Cable Route\_11x17.mxd



**Legend**

- Mile Marker
- Proposed Lake Cable Route \*
- - - Proposed Terrestrial Cable Route \*
- - - Approximate Town Boundary
- Streams
- Wetlands

0 1,000 2,000  
Feet

\* The thickness of the lines on this map are graphic representations and do not represent the actual dimensions of the proposed project features.

Created: 10/16/2014  
Data Sources: ESRI, VCGI, TDI New England, TRC, VHB

**TDI New England**  
A Blackstone Portfolio Company

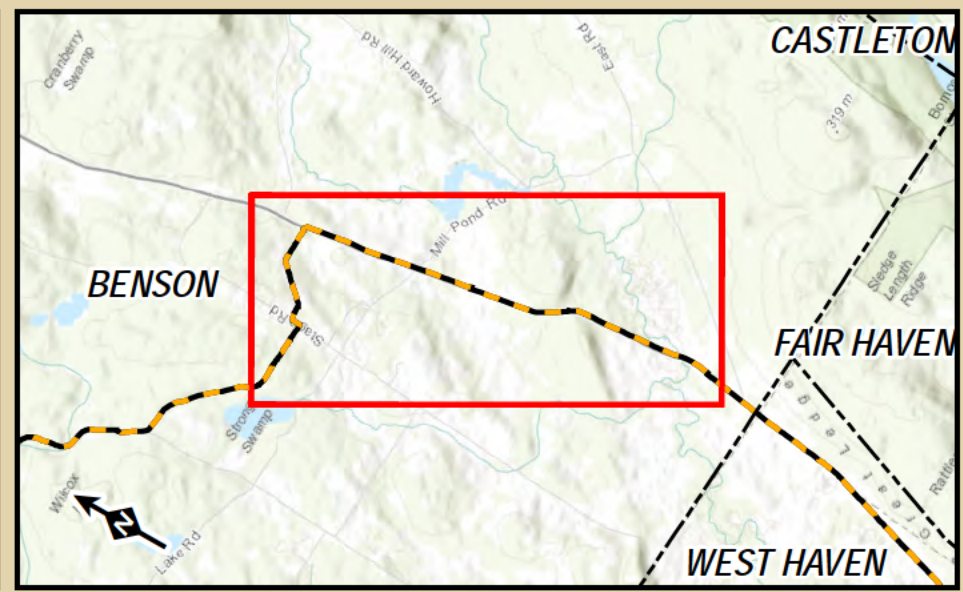
**New England Clean Power Link  
Proposed Route**

**7 of 23**

**TRC** 14 Gabriel Drive  
Augusta, ME 04330

V:\PROJECTS\AUGUSTADLINE\_Clean\_Power\Notice\_248\_Terrestrial\_Cable\_Route\_11x17.mxd





**Legend**

- Mile Marker
- Proposed Lake Cable Route \*
- - - Proposed Terrestrial Cable Route \*
- - - Approximate Town Boundary
- Streams
- Wetlands

Created: 10/16/2014  
Data Sources: ESRI, VCGI, TDI New England, TRC, VHB

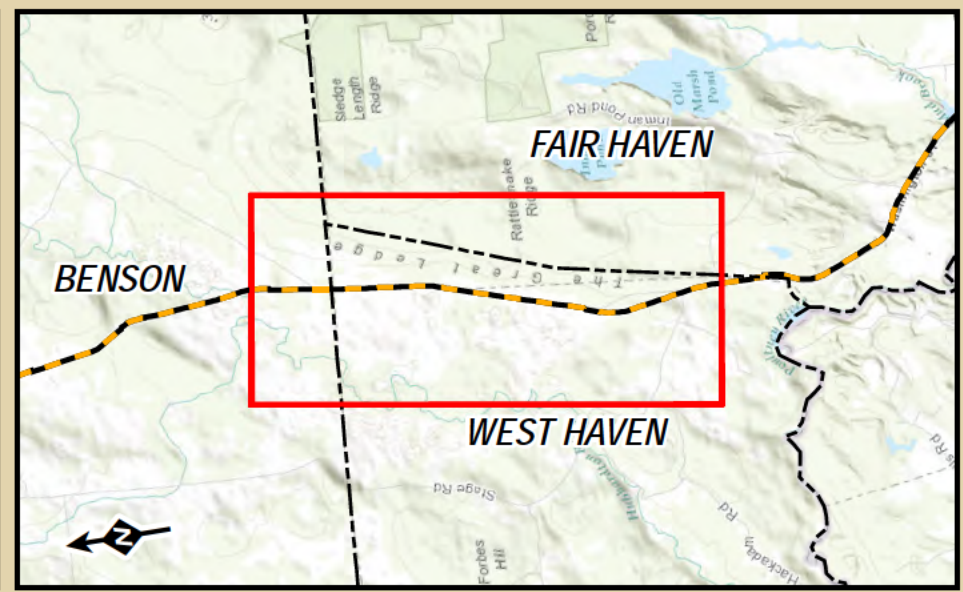
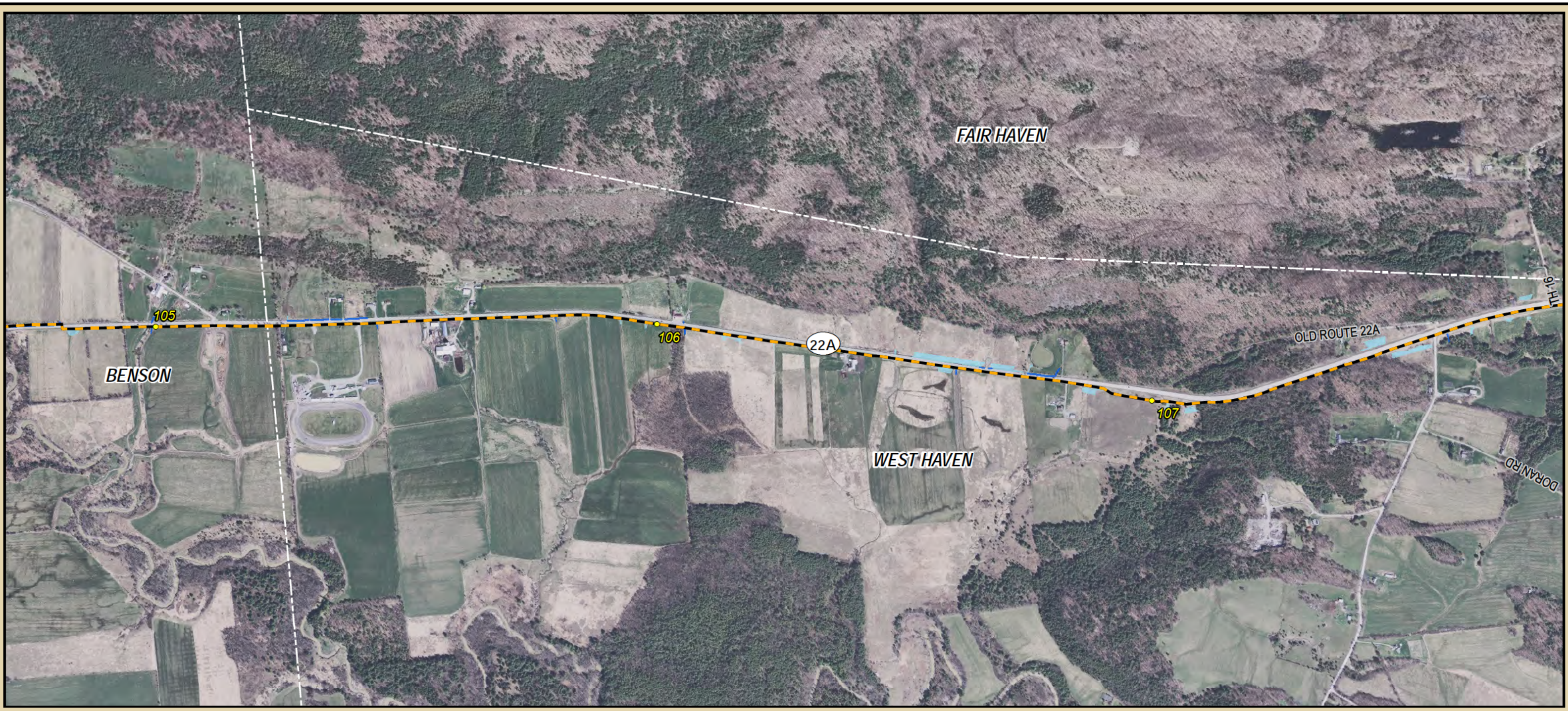
**TDI New England**  
A Blackstone Portfolio Company

**New England Clean Power Link  
Proposed Route**

**8 of 23**

**TRC** 14 Gabriel Drive  
Augusta, ME 04330

V:\PROJECTS\AUGUSTADLINE\_Clean\_Power\Notice\_248\_Terrestrial\_Cable\_Route\_111417.mxd



**Legend**

- Mile Marker
- Proposed Lake Cable Route \*
- - - Proposed Terrestrial Cable Route \*
- - - Approximate Town Boundary
- Streams
- Wetlands

0 1,000 2,000  
Feet

\* The thickness of the lines on this map are graphic representations and do not represent the actual dimensions of the proposed project features.

Created: 10/16/2014  
Data Sources: ESRI, VCGI, TDI New England, TRC, VHB

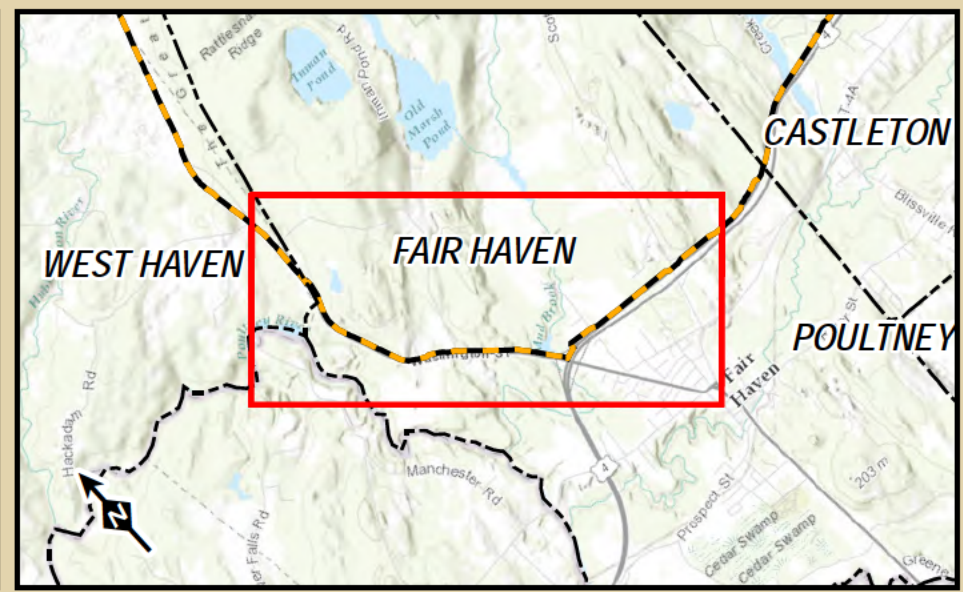
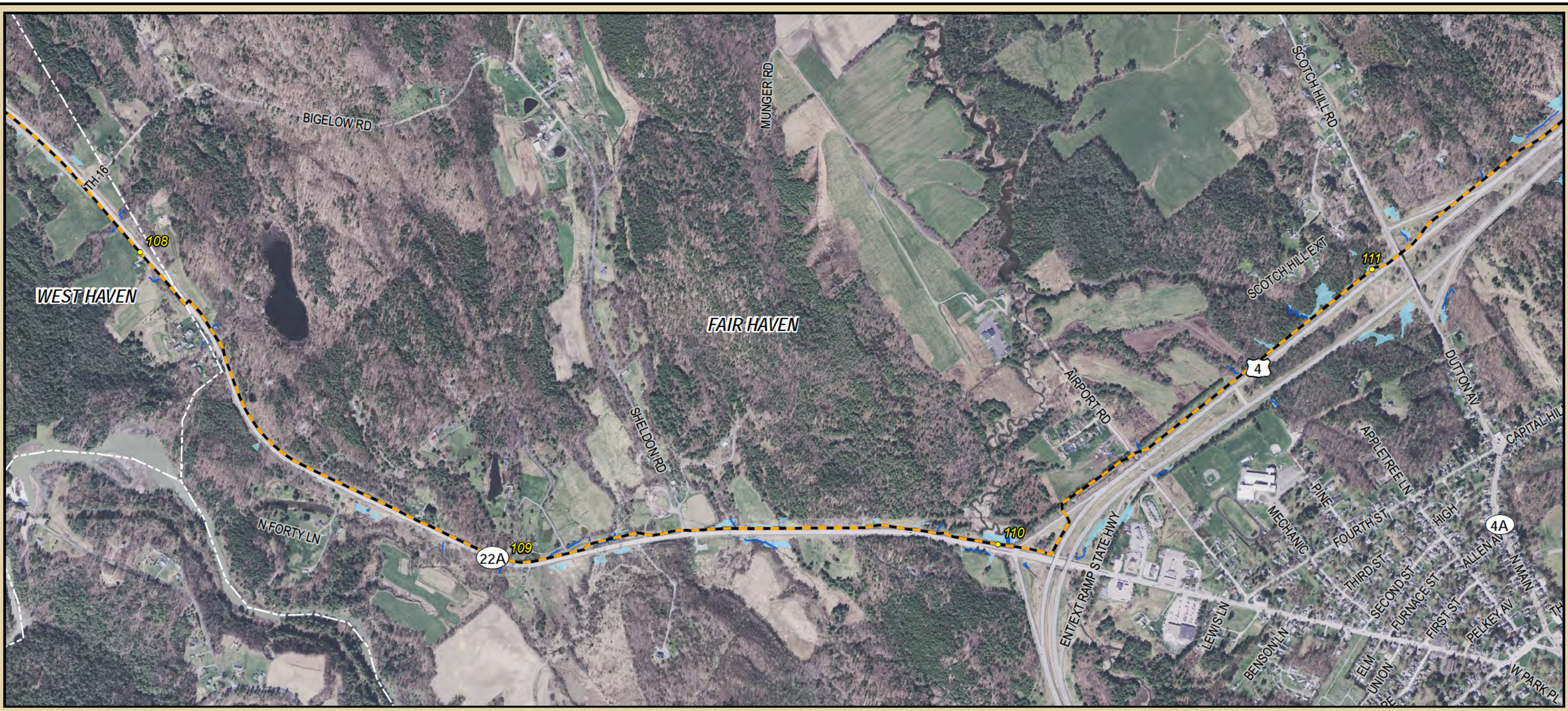
**TDI New England**  
A Blackstone Portfolio Company

**New England Clean Power Link  
Proposed Route**

**9 of 23**


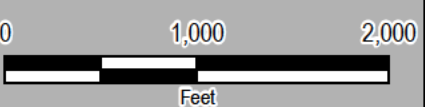
**TRC** 14 Gabriel Drive  
Augusta, ME 04330

V:\PROJECTS\AUGUST\TDI\NE\_Clean\_Power\Notice\_248\_Terrestrial\_Cable\_Route\_11x17.mxd





**Legend**

- Mile Marker
- Proposed Lake Cable Route \*
- Proposed Terrestrial Cable Route \*
- Approximate Town Boundary
- Streams
- Wetlands

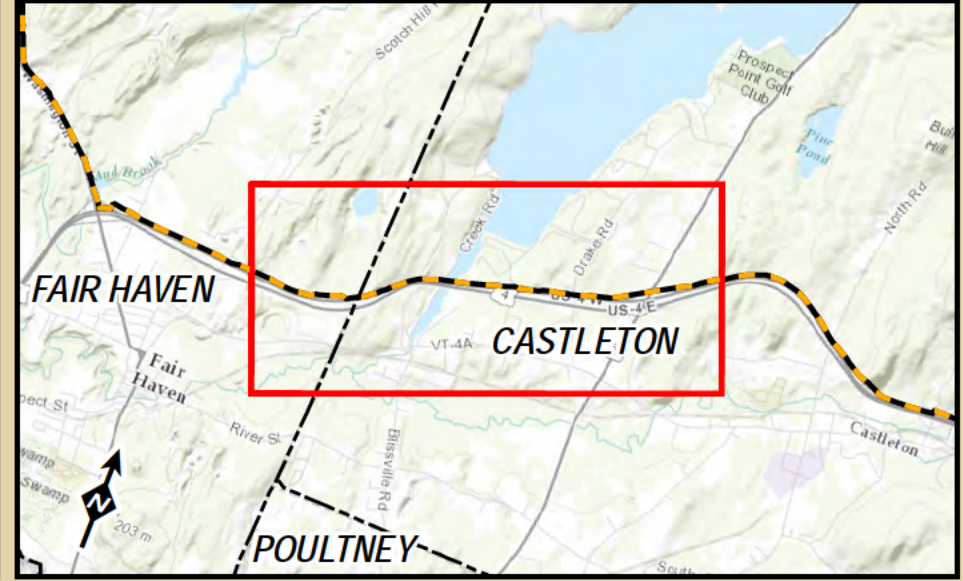
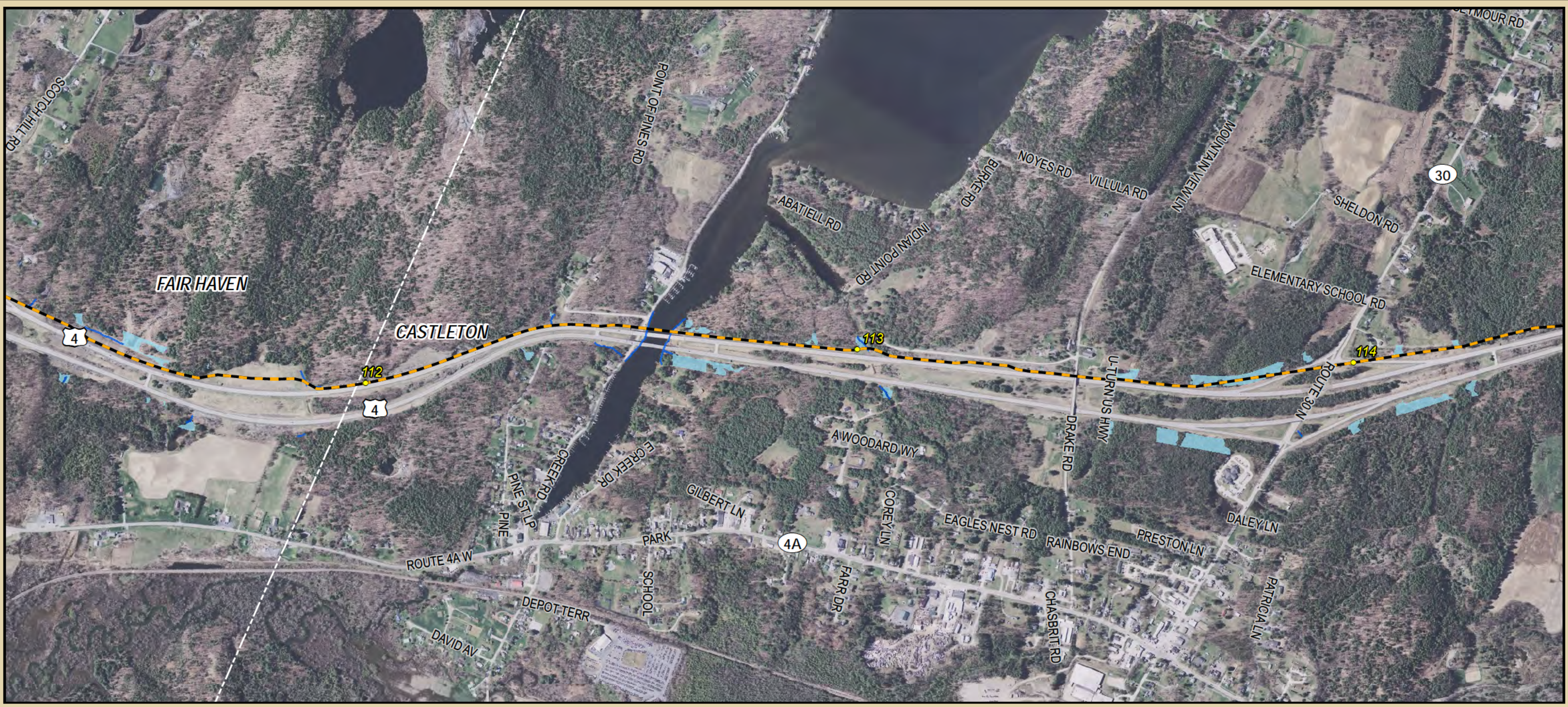
  
  
\* The thickness of the lines on this map are graphic representations and do not represent the actual dimensions of the proposed project features.

Created: 10/16/2014  
Data Sources: ESRI, VCGI, TDI New England, TRC, VHB

  
**New England Clean Power Link**  
*Proposed Route*  
**10 of 23**


14 Gabriel Drive  
Augusta, ME 04330

V:\PROJECTS\AUGUSTADLINE\_Clean\_Power\Notice\_248\_Terrestrial\_Cable\_Route\_11x17.mxd



**Legend**

- Mile Marker
- Proposed Lake Cable Route \*
- Proposed Terrestrial Cable Route \*
- - - Approximate Town Boundary
- Streams
- Wetlands

0 1,000 2,000  
Feet

\* The thickness of the lines on this map are graphic representations and do not represent the actual dimensions of the proposed project features.

Created: 10/16/2014  
Data Sources: ESRI, VCGI, TDI New England, TRC, VHB

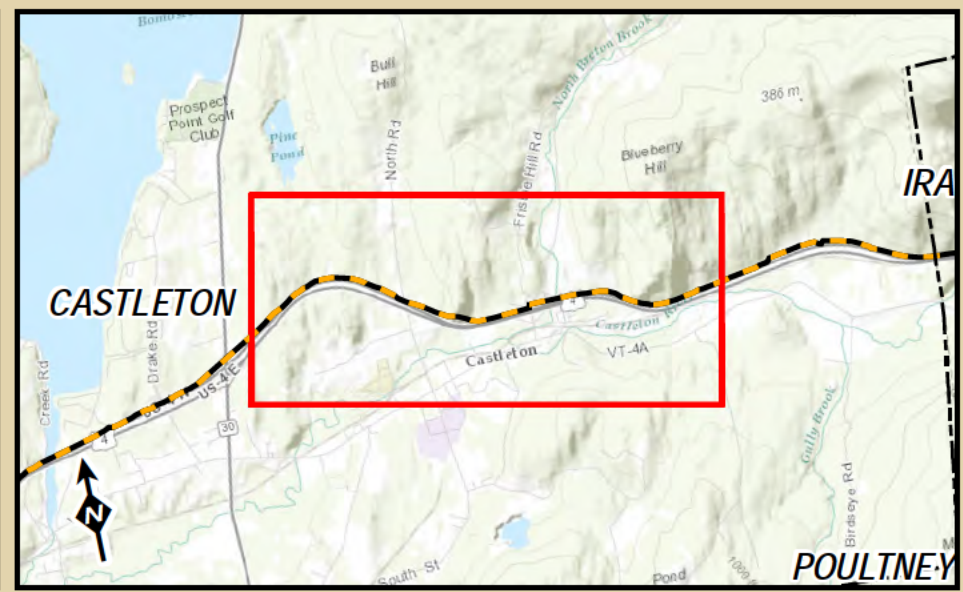
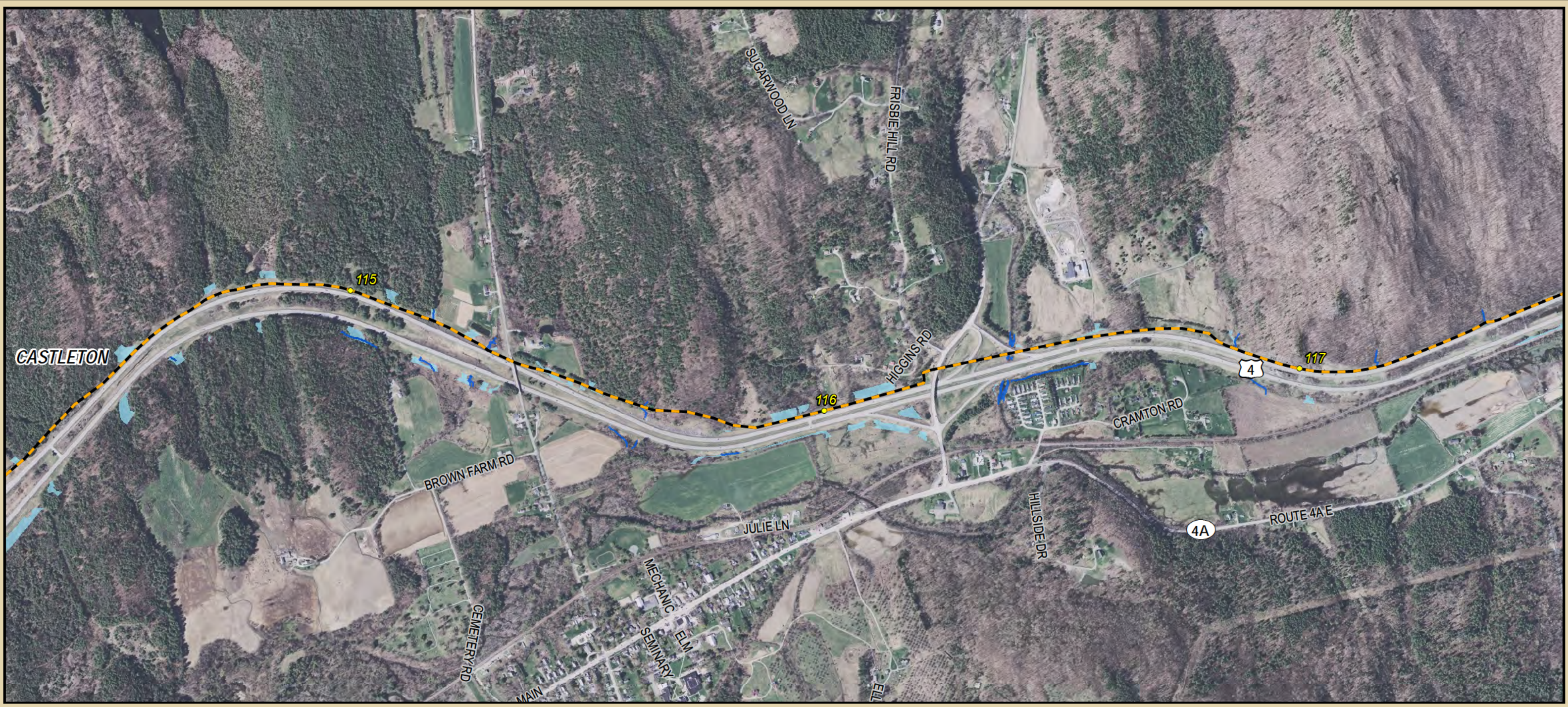
**TDI New England**  
A Blackstone Portfolio Company

**New England Clean Power Link  
Proposed Route**

**11 of 23**


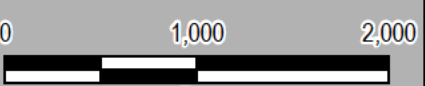
**TRC** 14 Gabriel Drive  
Augusta, ME 04330

V:\PROJECTS\AUGUSTADLINE\_Clean\_Power\Notice\_248\_Terrestrial\_Cable\_Route\_11x17.mxd




**Legend**

- Mile Marker
- Proposed Lake Cable Route \*
- Proposed Terrestrial Cable Route \*
- Approximate Town Boundary
- Streams
- Wetlands


  
  
 \* The thickness of the lines on this map are graphic representations and do not represent the actual dimensions of the proposed project features.

Created: 10/16/2014  
Data Sources: ESRI, VCGI, TDI New England, TRC, VHB

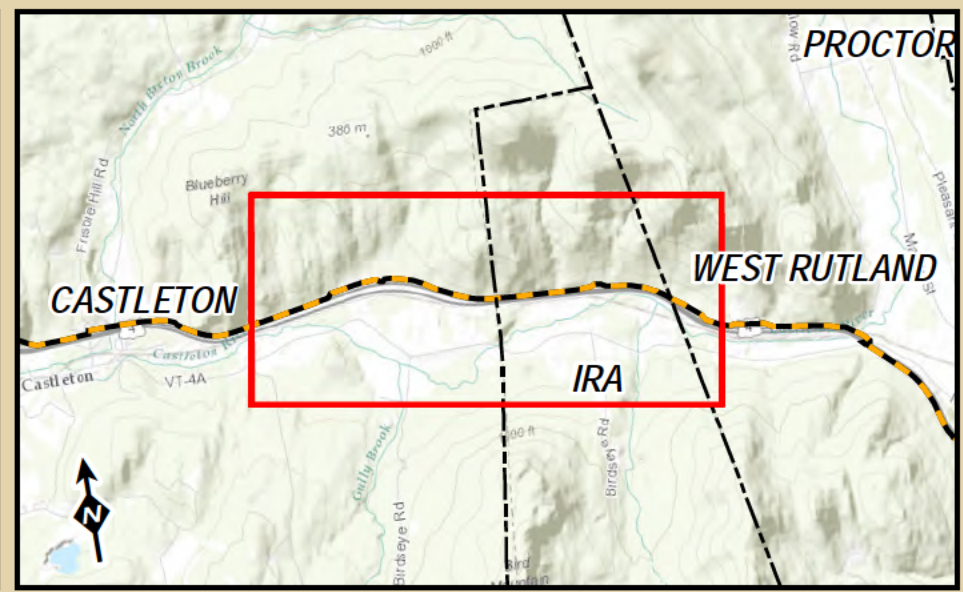
  
**TDI New England**  
 A Blackstone Portfolio Company

**New England  
 Clean Power Link  
 Proposed Route**

12 of 23


14 Gabriel Drive  
Augusta, ME 04330

V:\PROJECTS\AUGUSTADLINE\_Clean\_Power\Notice\_248\_Terrestrial\_Cable\_Route\_11x17.mxd



**Legend**

- Mile Marker
- Proposed Lake Cable Route \*
- Proposed Terrestrial Cable Route \*
- - - Approximate Town Boundary
- Streams
- Wetlands

0 1,000 2,000  
Feet

\* The thickness of the lines on this map are graphic representations and do not represent the actual dimensions of the proposed project features.

Created: 10/16/2014  
Data Sources: ESRI, VCGI, TDI New England, TRC, VHB

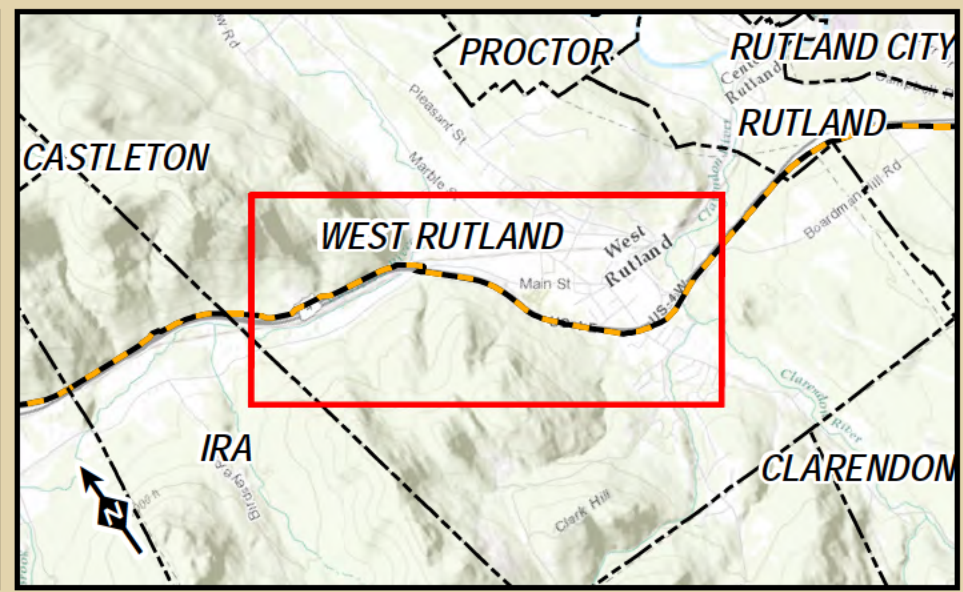
**TDI New England**  
A Blackstone Portfolio Company

**New England Clean Power Link  
Proposed Route**

**13 of 23**

**TRC** 14 Gabriel Drive  
Augusta, ME 04330

V:\PROJECTS\AUGUSTADLINE\_Clean\_Power\Notice\_248\_Terrestrial\_Cable\_Route\_11x17.mxd



**Legend**

- Mile Marker
- Proposed Lake Cable Route \*
- Proposed Terrestrial Cable Route \*
- Approximate Town Boundary
- Streams
- Wetlands

\* The thickness of the lines on this map are graphic representations and do not represent the actual dimensions of the proposed project features.

Created: 10/16/2014

Data Sources: ESRI, VCGI, TDI New England, TRC, VHB

**TDI New England**  
 A Blackstone Portfolio Company

---

**New England  
Clean Power Link  
Proposed Route**

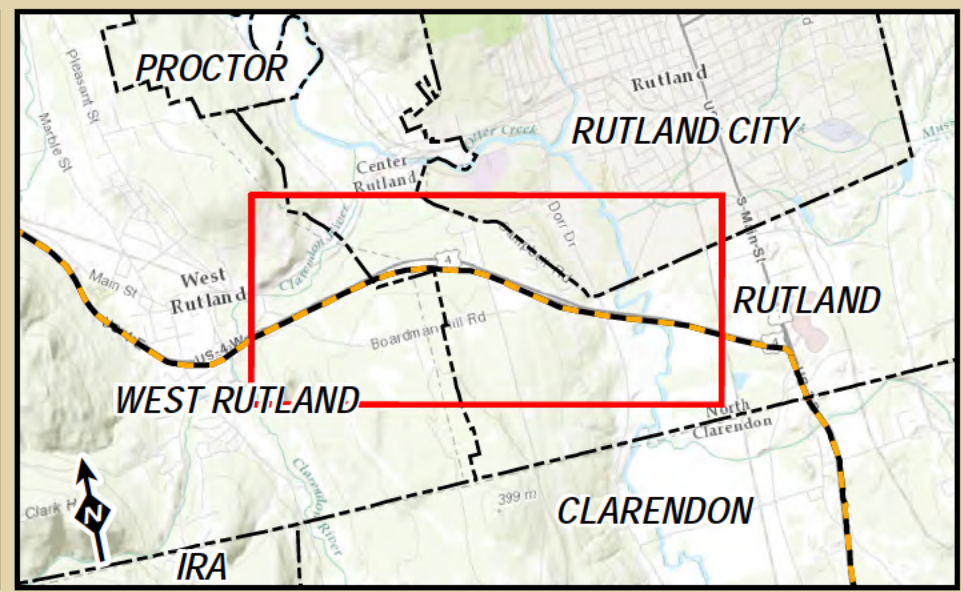
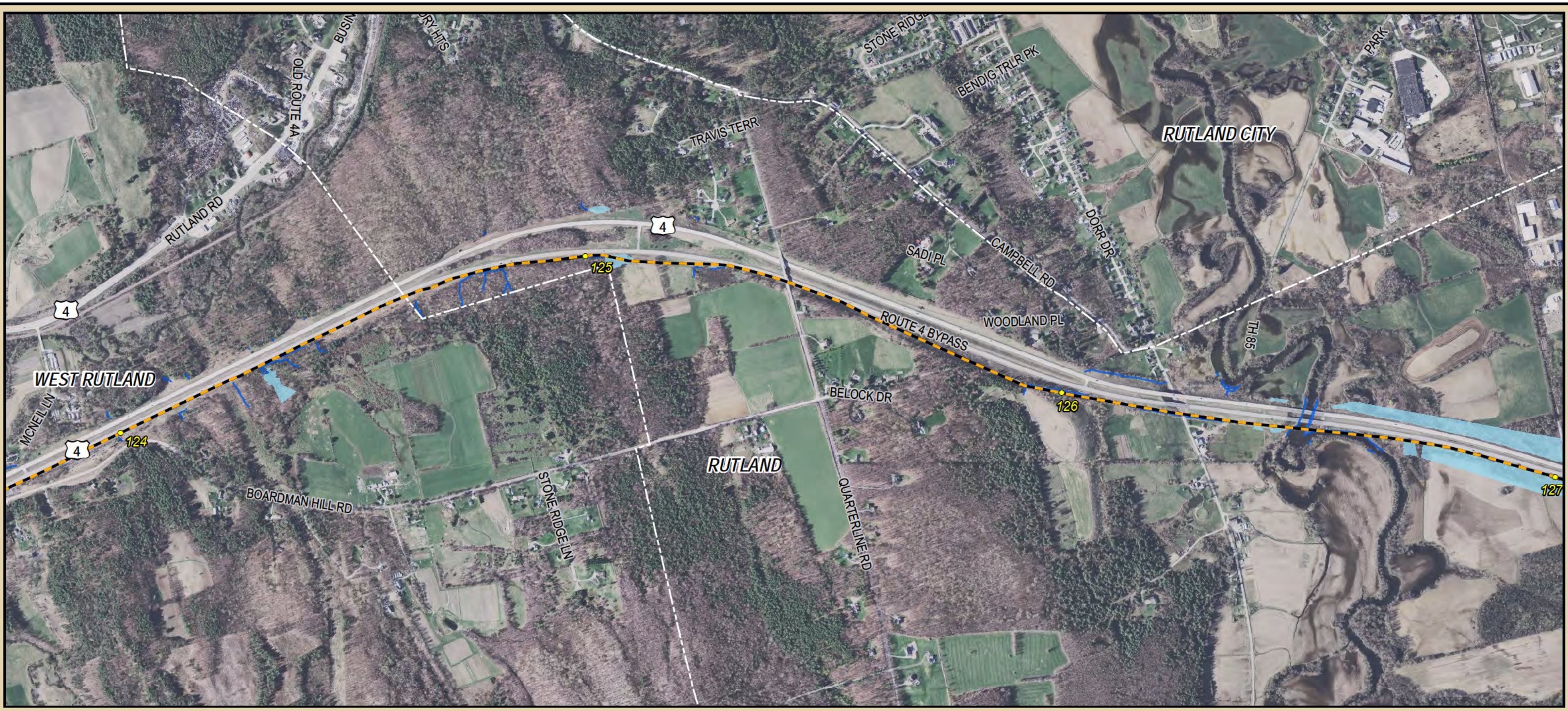
---

**14 of 23**

---

14 Gabriel Drive  
Augusta, ME 04330

V:\PROJECTS\AUGUSTADLINE\_Clean\_Power\Notice\_248\_Terrestrial\_Cable\_Route\_11x17.mxd



**Legend**

- Mile Marker
- Proposed Lake Cable Route \*
- Proposed Terrestrial Cable Route \*
- - - Approximate Town Boundary
- Streams
- Wetlands

0 1,000 2,000  
Feet

\* The thickness of the lines on this map are graphic representations and do not represent the actual dimensions of the proposed project features.

Created: 10/16/2014  
Data Sources: ESRI, VCGI, TDI New England, TRC, VHB

**TDI New England**  
A Blackstone Portfolio Company

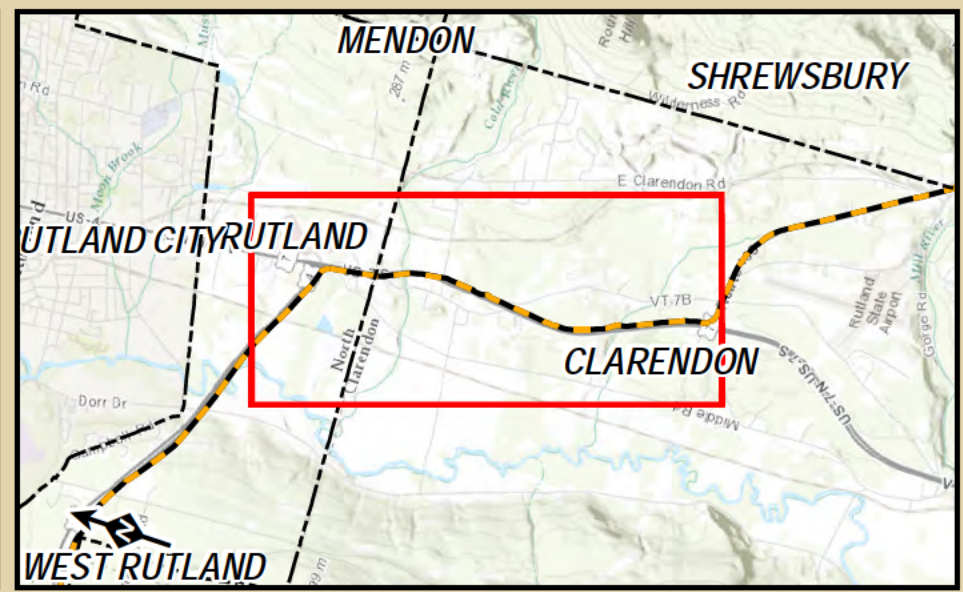
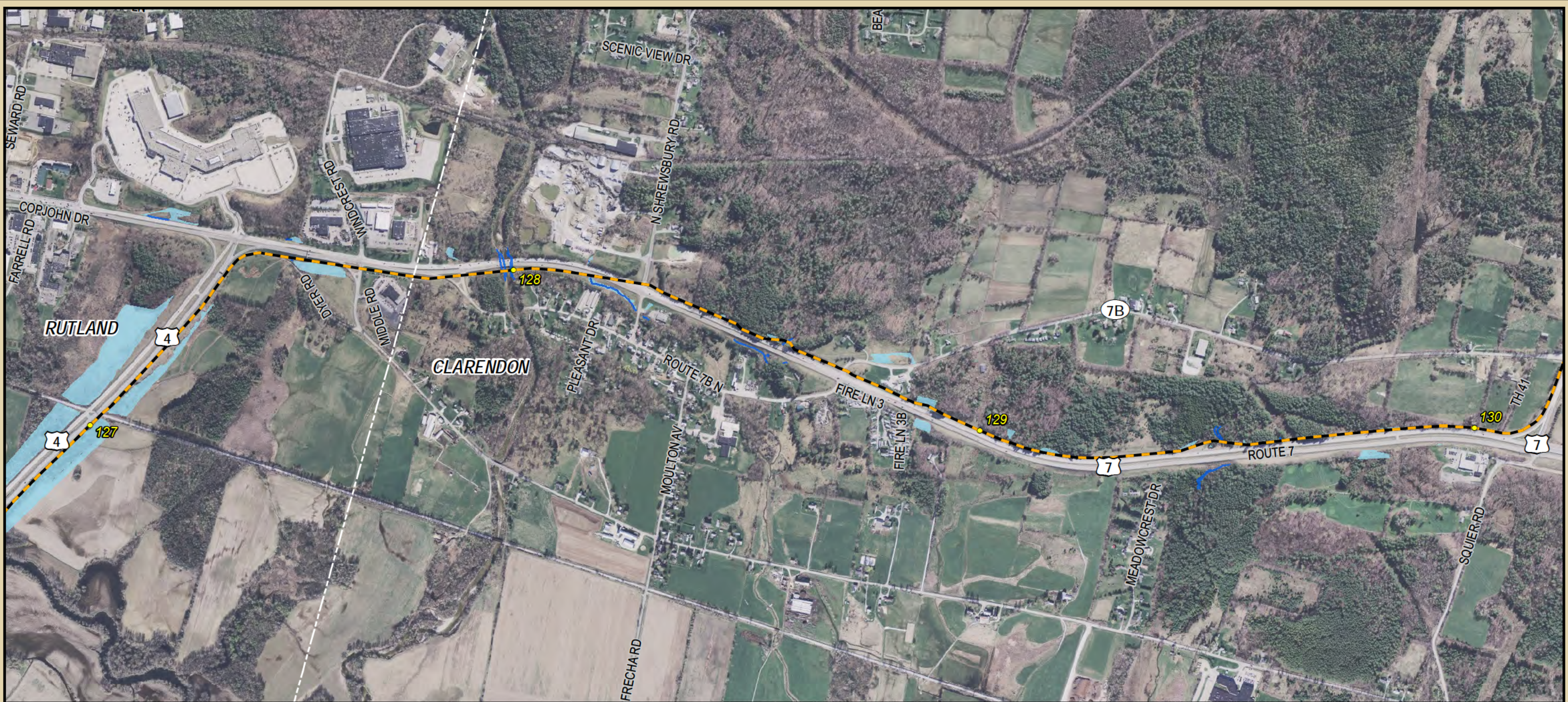
**New England Clean Power Link  
Proposed Route**

**15 of 23**

**TRC** 14 Gabriel Drive  
Augusta, ME 04330

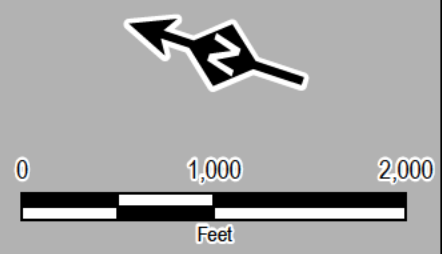
V:\PROJECTS\AUGUSTADLINE\_Clean\_Power\Notice\_248\_Terrestrial\_Cable\_Route\_11x17.mxd





**Legend**

- Mile Marker
- Proposed Lake Cable Route \*
- Proposed Terrestrial Cable Route \*
- Approximate Town Boundary
- Streams
- Wetlands



\* The thickness of the lines on this map are graphic representations and do not represent the actual dimensions of the proposed project features.

Created: 10/16/2014

Data Sources: ESRI, VCGI, TDI New England, TRC, VHB

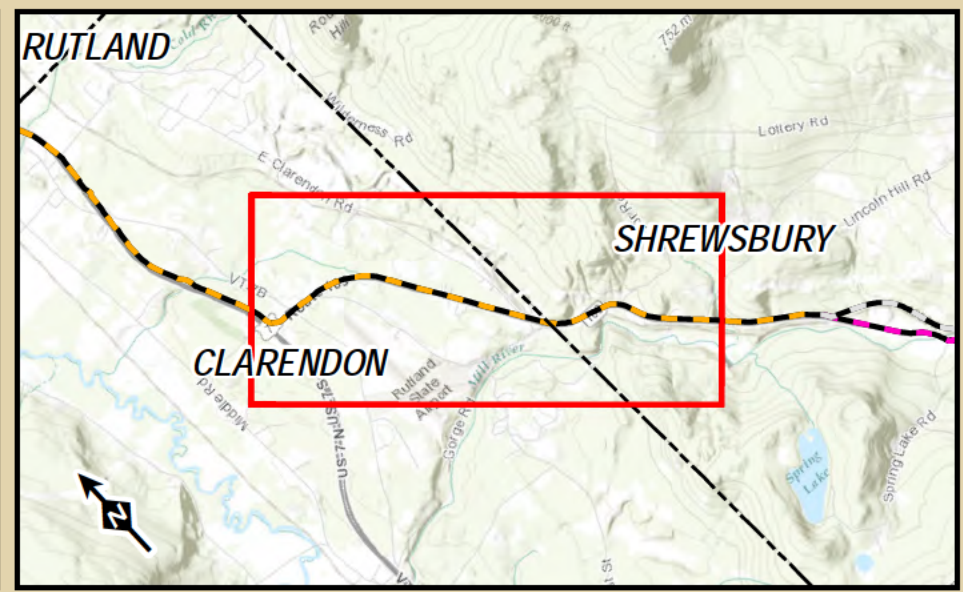


**New England  
Clean Power Link  
Proposed Route**

**16 of 23**



V:\PROJECTS\AUGUSTA\TDI\INE\_Clean\_Power\Notice\_248\_Terrestrial\_Cable\_Route\_11x17.mxd



**Legend**

- Mile Marker
- Proposed Lake Cable Route \*
- Proposed Terrestrial Cable Route \*
- Approximate Town Boundary
- Streams
- Wetlands

\* The thickness of the lines on this map are graphic representations and do not represent the actual dimensions of the proposed project features.

Created: 10/16/2014

Data Sources: ESRI, VCGI, TDI New England, TRC, VHB

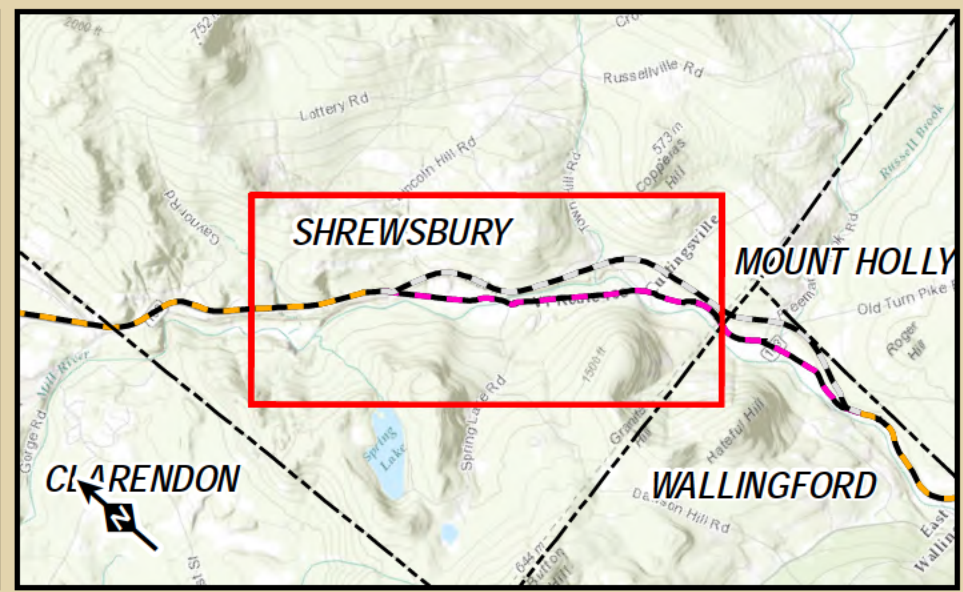
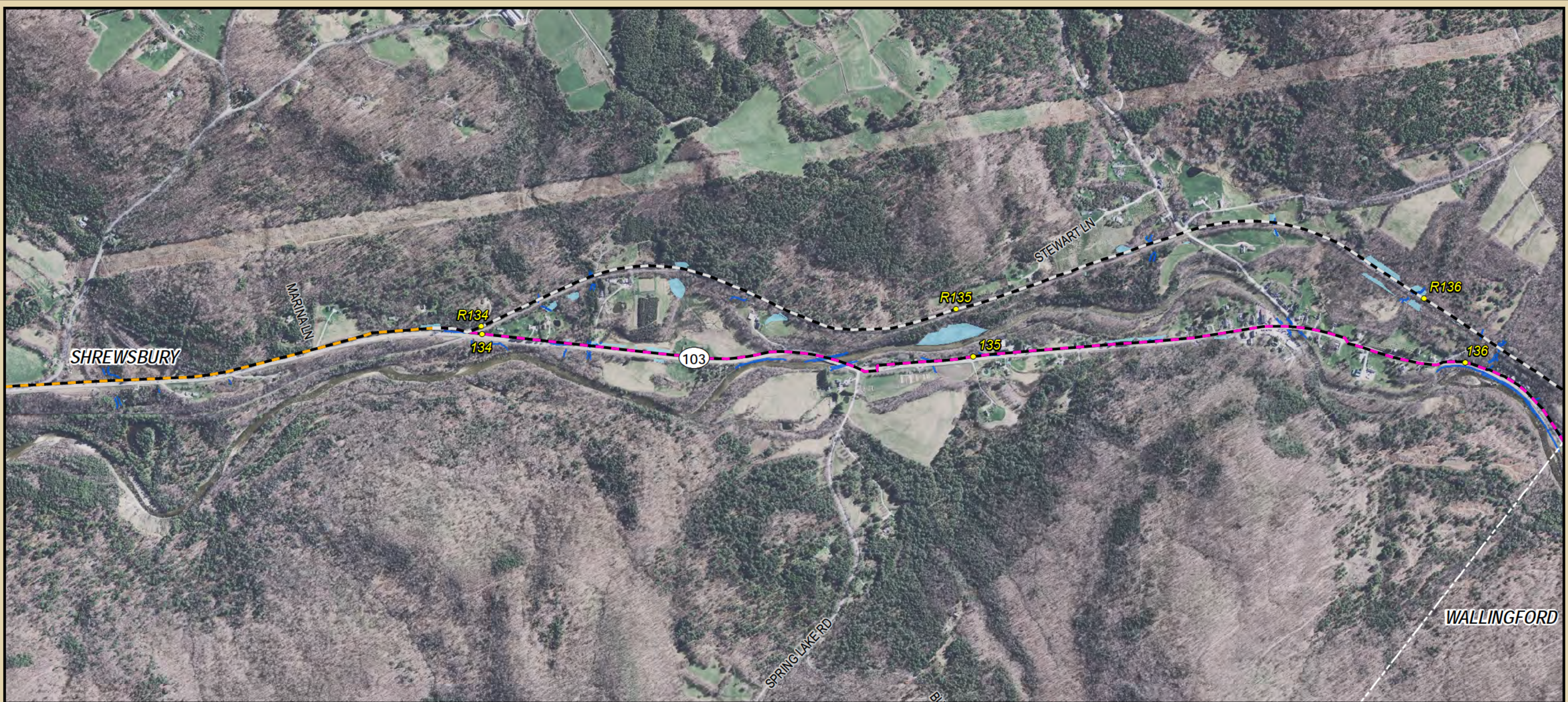
**TDI New England**  
A Blackstone Portfolio Company

## New England Clean Power Link Proposed Route

# 17 of 23

14 Gabriel Drive  
Augusta, ME 04330

V:\PROJECTS\AUGUSTADLINE\_Clean\_Power\Notice\_248\_Terrestrial\_Cable\_Route\_11x17.mxd



**Legend**

- Mile Marker
- Proposed Lake Cable Route \*
- Proposed Terrestrial Cable Route \*
- RR Option \*
- Road Option \*
- Approximate Town Boundary
- Streams
- Wetlands

Created: 10/16/2014  
Data Sources: ESRI, VCGI, TDI New England, TRC, VHB

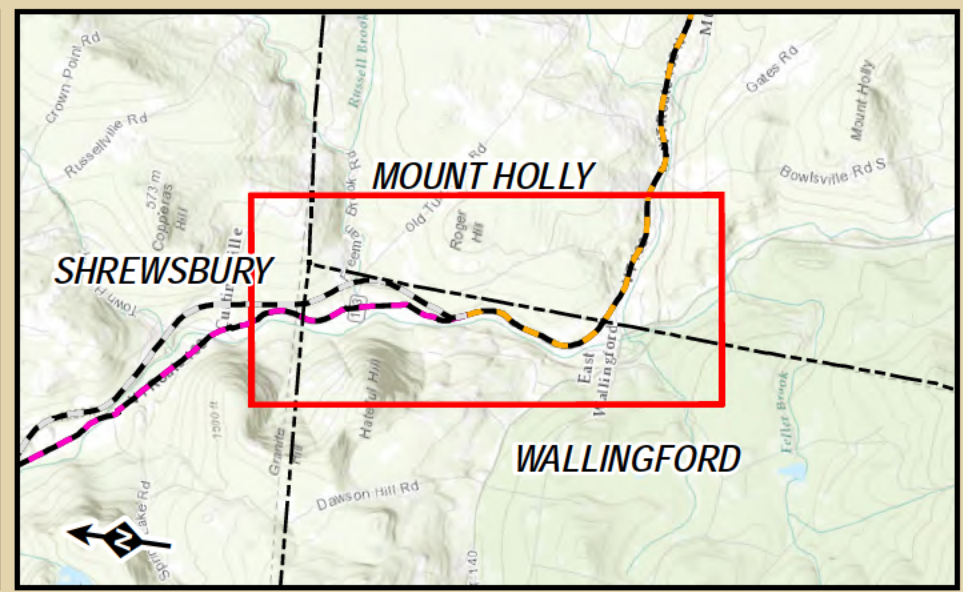
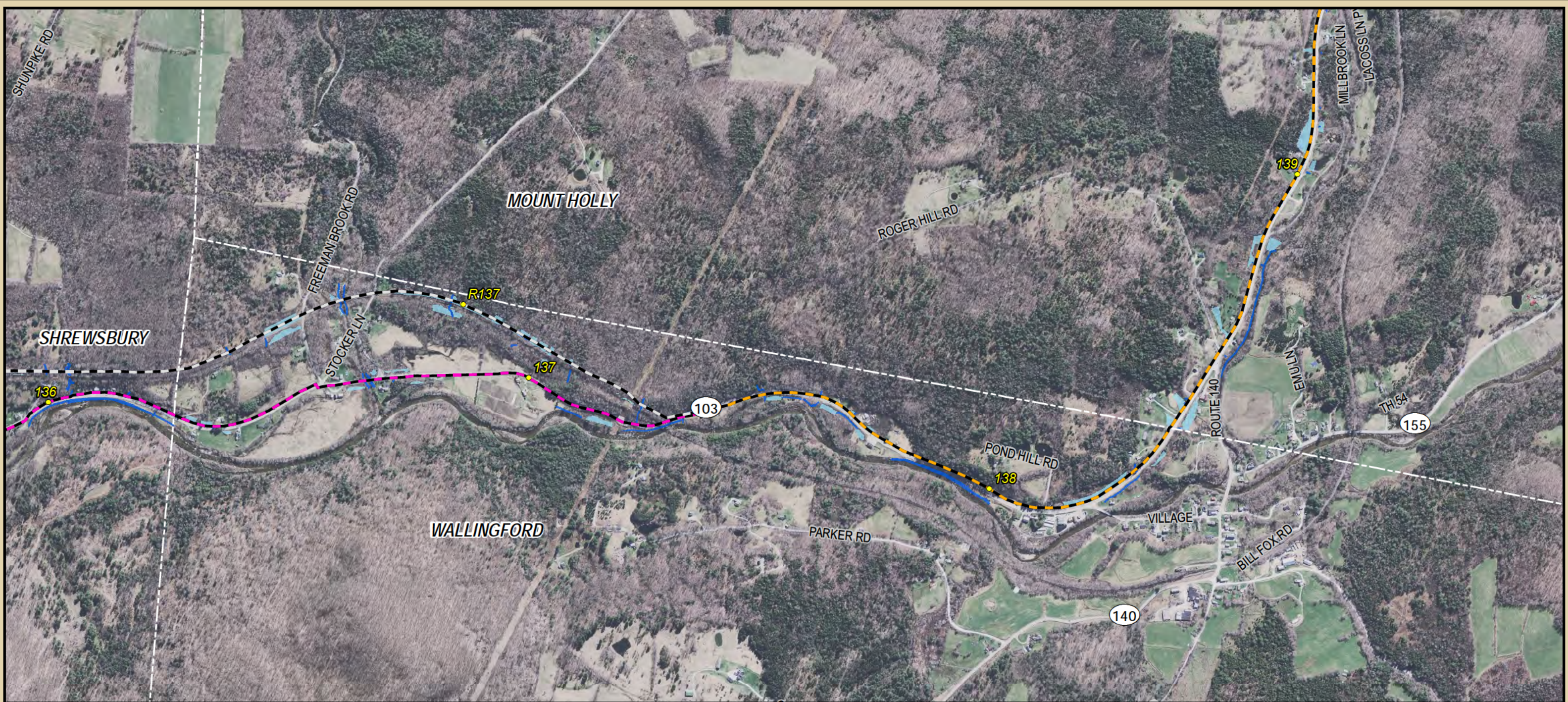
**TDI New England**  
A Blackstone Portfolio Company

**New England Clean Power Link  
Proposed Route**

**18 of 23**

**TRC** 14 Gabriel Drive  
Augusta, ME 04330

V:\PROJECTS\AUGUSTADLINE\_Clean\_Power\Notice\_248\_Terrestrial\_Cable\_Route\_11x17.mxd



**Legend**

- Mile Marker
- Proposed Lake Cable Route \*
- Proposed Terrestrial Cable Route \*
- Road Option \*
- RR Option \*
- Approximate Town Boundary
- Streams
- Wetlands

\* The thickness of the lines on this map are graphic representations and do not represent the actual dimensions of the proposed project features.

Created: 10/16/2014  
Data Sources: ESRI, VCGI, TDI New England, TRC, VHB

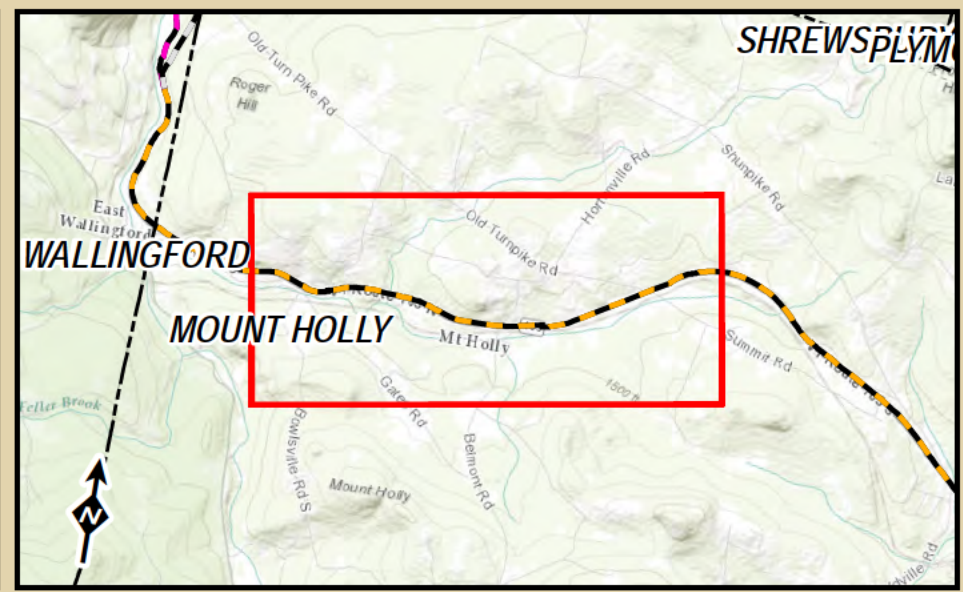
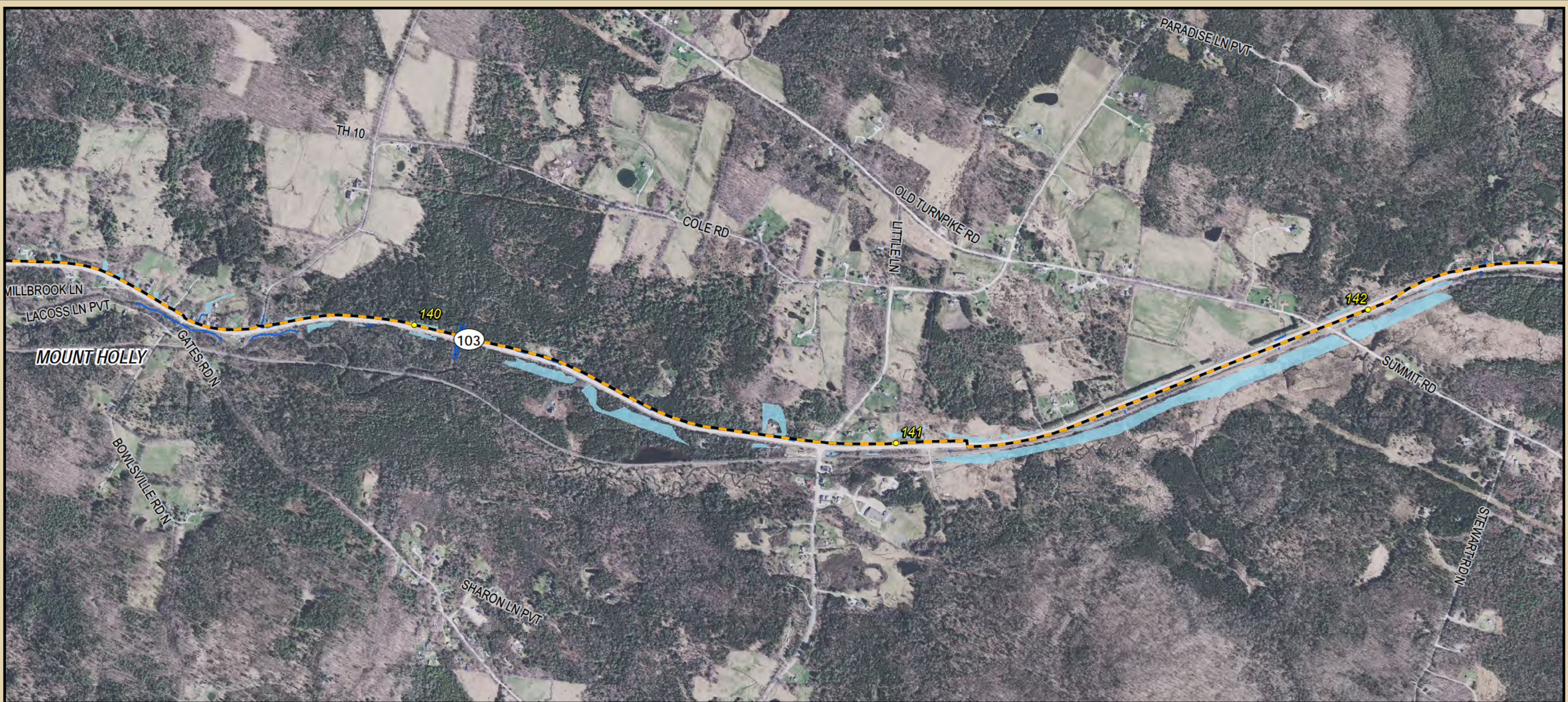
**TDI New England**  
A Blackstone Portfolio Company

**New England  
Clean Power Link  
Proposed Route**

**19 of 23**

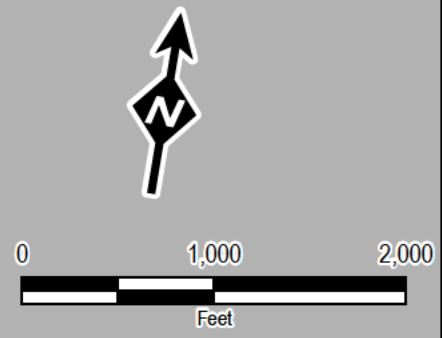
14 Gabriel Drive  
Augusta, ME 04330

V:\PROJECTS\AUGUSTADLINE\_Clean\_Power\Notice\_248\_Terrestrial\_Cable\_Route\_11x17.mxd



**Legend**

- Mile Marker
- Proposed Lake Cable Route \*
- - - Proposed Terrestrial Cable Route \*
- - - Approximate Town Boundary
- Streams
- Wetlands



\* The thickness of the lines on this map are graphic representations and do not represent the actual dimensions of the proposed project features.

Created: 10/16/2014

Data Sources: ESRI, VCGI, TDI New England, TRC, VHB

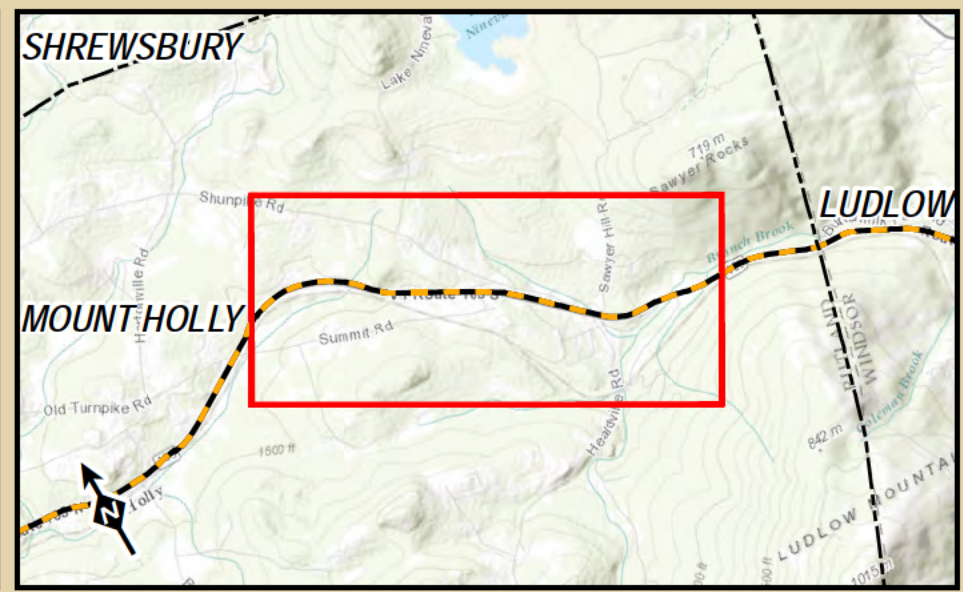
**TDI New England**  
A Blackstone Portfolio Company

**New England Clean Power Link  
Proposed Route**

**20 of 23**

**TRC** 14 Gabriel Drive  
Augusta, ME 04330

V:\PROJECTS\AUGUSTADLINE\_Clean\_Power\Notice\_248\_Terrestrial\_Cable\_Route\_11x17.mxd



**Legend**

- Mile Marker
- Proposed Lake Cable Route \*
- Proposed Terrestrial Cable Route \*
- Approximate Town Boundary
- Streams
- Wetlands

\* The thickness of the lines on this map are graphic representations and do not represent the actual dimensions of the proposed project features.

Created: 10/16/2014  
Data Sources: ESRI, VCGI, TDI New England, TRC, VHB

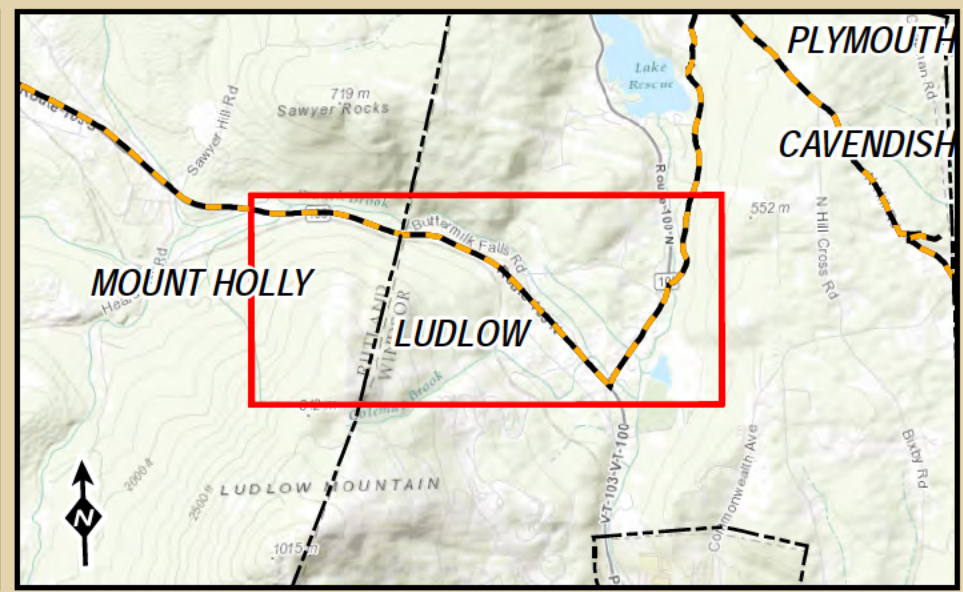
**TDI New England**  
A Blackstone Portfolio Company

**New England  
Clean Power Link  
Proposed Route**

**21 of 23**


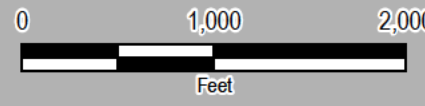
14 Gabriel Drive  
Augusta, ME 04330

V:\PROJECTS\AUGUST\AUGUST\Clean\_Power\Notice\_248\_Terrestrial\_Cable\_Route\_11x17.mxd



**Legend**

- Mile Marker
- Proposed Lake Cable Route \*
- Proposed Terrestrial Cable Route \*
- Approximate Town Boundary
- Streams
- Wetlands



  


0 1,000 2,000  
Feet

\* The thickness of the lines on this map are graphic representations and do not represent the actual dimensions of the proposed project features.

Created: 10/16/2014


Data Sources: ESRI, VCGI, TDI New England, TRC, VHB



**TDI New England**  
A Blackstone Portfolio Company

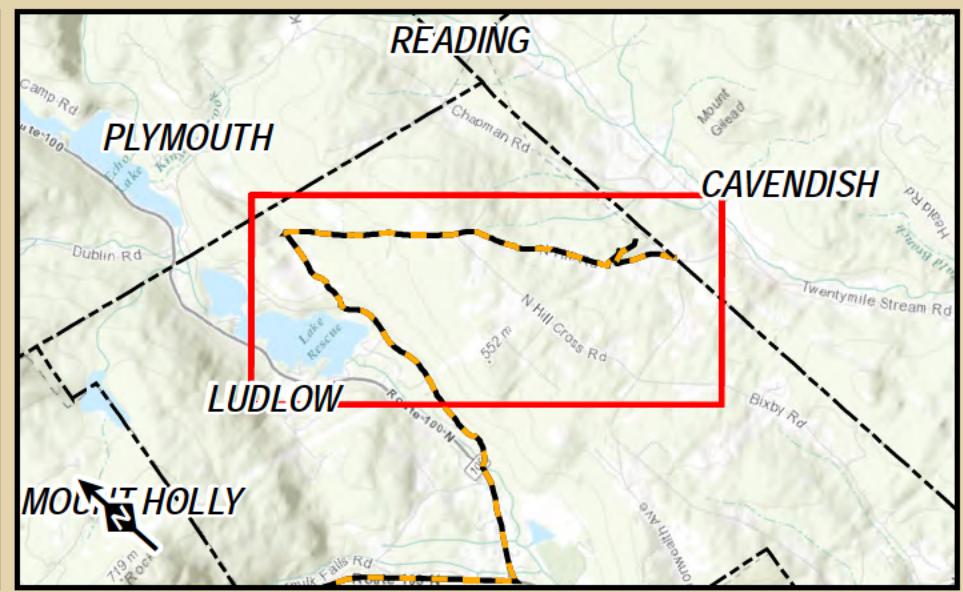
**New England  
Clean Power Link  
Proposed Route**

**22 of 23**



14 Gabriel Drive  
Augusta, ME 04330

V:\PROJECTS\AUGUSTADLINE\_Clean\_Power\Notice\_248\_Terrestrial\_Cable\_Route\_11x17.mxd



**Legend**

- Mile Marker
- — — Proposed Lake Cable Route \*
- — — Proposed Terrestrial Cable Route \*
- Approximate Town Boundary
- Streams
- Wetlands

\* The thickness of the lines on this map are graphic representations and do not represent the actual dimensions of the proposed project features.

Created: 10/16/2014  
 Data Sources: ESRI, VCGI, TDI New England, TRC, VHB

**TDI New England**  
 A Blackstone Portfolio Company

**New England  
 Clean Power Link  
 Proposed Route**

**23 of 23**

14 Gabriel Drive  
 Augusta, ME 04330

V:\PROJECTS\AUGUSTA\TDI\NE\_Clean\_Power\Notice\_248\_Terrestrial\_Cable\_Route\_11x17.mxd